

**WE
PRODUCE**

Value | Growth | Innovation



LARICINA
E N E R G Y L T D.

Managing Well Integrity Data in a Growing Company

**Rob Noble P.Eng.
Drilling & Completions
Laricina Energy Ltd.**

Nov 19th, 2013

Forward-looking Statements Advisory



This Laricina Energy Ltd. (the “Company”) presentation contains certain forward-looking statements. Forward-looking statements may include, but are not limited to, statements concerning estimates of exploitable original-bitumen-in-place, predicted recovery factors, steam-to-oil ratios and well production rates, estimated recoverable resources as defined below, expected regulatory filing, review and approval dates, construction and start-up timelines and schedules, company project potential production volumes as well as comparisons to other projects, statements relating to the continued overall advancement of the Company’s projects, comparisons of recoverable resources to other oil sands projects, estimated relative supply costs, potential cost reductions, recovery and production increases resulting from the application of new technology and recovery schemes, estimates of carbon sequestration capacity, costs for carbon capture and sequestration and possible implementation schedule for carbon capture and sequestration processes or related emissions mitigation or reduction scheme and other statements which are not historical facts. You are cautioned not to place undue reliance on any forward-looking statements as there can be no assurance that the plans, intentions or expectations upon which they are based will occur. By their nature forward-looking statements involve numerous assumptions, known and unknown risks and uncertainties, both generally and specific, that contribute to the possibility that the predictions, forecasts, projections and other forward-looking statements will not occur. Although the Company believes that the expectations represented by such forward-looking statements are reasonable, there can be no assurance that such expectations will prove to be correct and, accordingly that actual results will be consistent with the forward-looking statements. Some of the risks and other factors that could cause results to differ materially from those expressed in the forward-looking statements contained in this presentation include, but are not limited to geological conditions relating to the Company’s properties, the impact of regulatory changes especially as such relate to royalties, taxation and environmental changes, the impact of technology on operations and processes and the performance of new technology expected to be applied or utilized by the Company; labour shortages; supply and demand metrics for oil and natural gas; the impact of pipeline capacity, upgrading capacity and refinery demand; general economic business and market conditions and such other risks and uncertainties described from time to time in the reports and filings made with security regulatory authorities, contained in other disclosure documents or otherwise provided by the Company. Furthermore the forward-looking statements contained in this presentation are made as of the date hereof. Unless required by law the Company does not undertake any obligation to update publicly or to revise any of the included forward-looking statements, whether as a result of new information, future events or otherwise. The forward-looking statements contained in this presentation are expressly qualified by this advisory and disclaimer.

Outline

- Small Company – Few People
- Growth and Expansion
- Data Types
- Data Management
- Data Analysis
- Data Storage
- Operations
- Well Life



Small Company

- Personal Drives
- Personal Knowledge
- Email
- Personal file in office
- Well files
 - All in one place
 - Wellman



Growth and Expansion

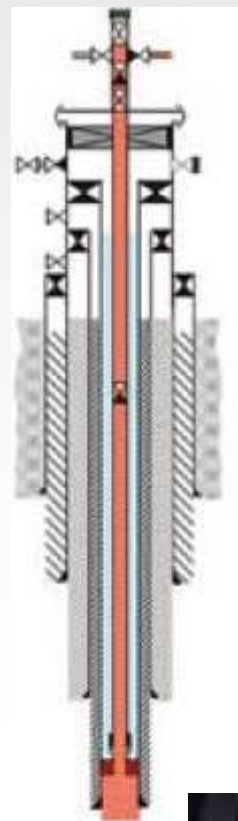


- Promotions
- New Hires
- Expanding Projects / Increased Scale
- Issues
 - Continuity of Data
 - Locating relevant files
 - File Structure
 - Nomenclature
 - Lessons Learned



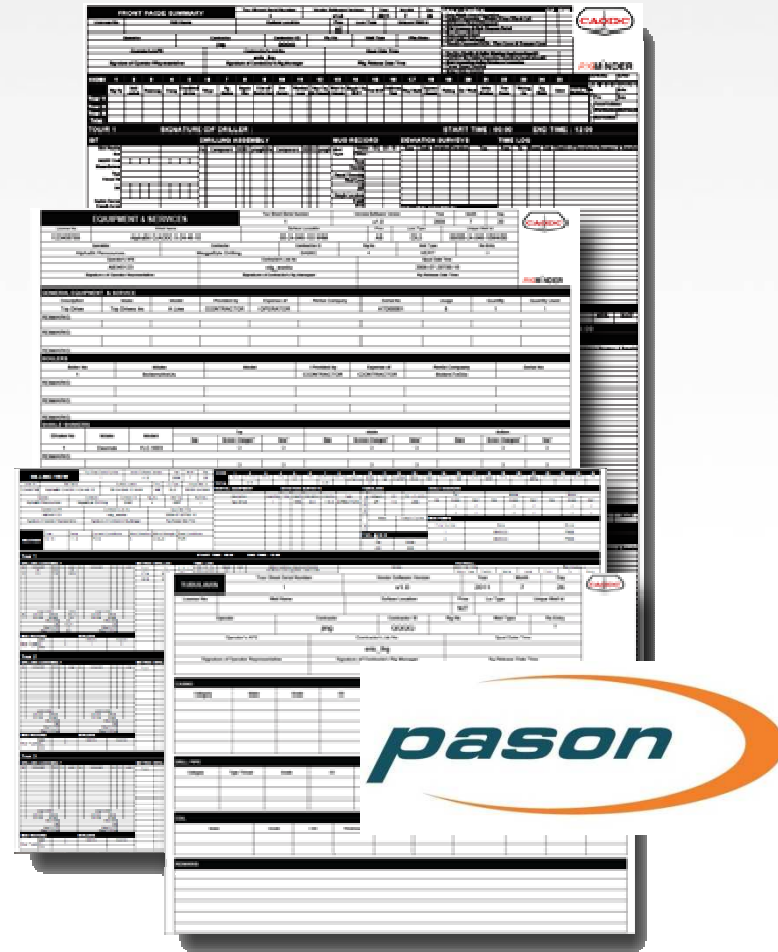
Data Types

- Soft Data
- Designs
 - Casing Depth, Grade, Size
 - Cement
 - Completions
- Applications
 - Regulatory
- Geological
 - Progs, Logs, Cores, Seismic



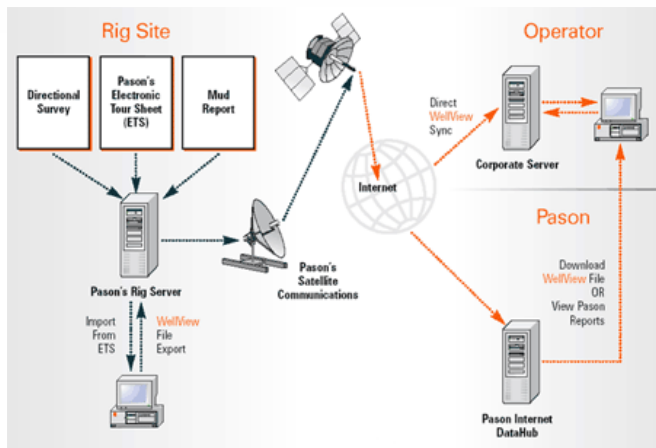
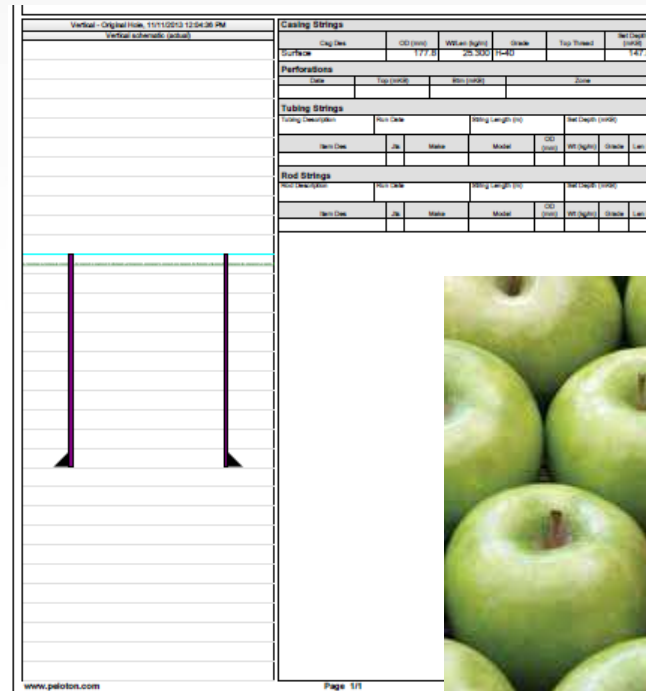
Data Types

- Drilling and Completions
 - Tour Sheets
 - Reports
 - Cementing
 - Torque Turn, etc.
 - Design changes
 - Handover
- Operations
 - Injection & Production
 - Workovers



Data Management

- “... is the development, execution and supervision of plans, policies, programs and practices that control, protect, deliver and enhance the value of data and information assets.”
- Data Quality
- Data Source
- Data Quantity

The screenshot shows a well log software interface. The top right contains a **Casing Settings** table:

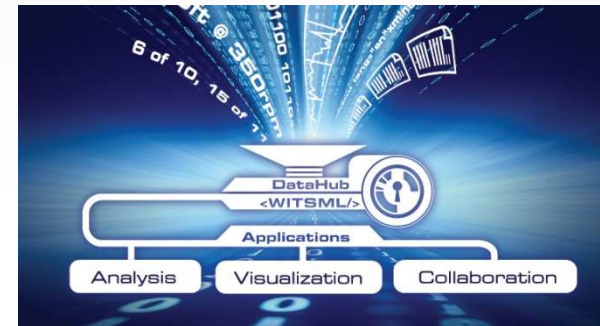
Casing Name	OD (mm)	AW (mm)	Grade	Top (m)	Net Depth (m)
Surface	177.8	25.500	11-40		147.00

Below this are sections for **Perforations**, **Tubing Strings**, and **Rod Strings**, each with columns for **From (m)**, **To (m)**, **String Length (m)**, and **Net Depth (m)**. The main area shows a well diagram with two vertical lines representing casing strings. The footer includes **www.palotin.com** and **Page 1/1**.



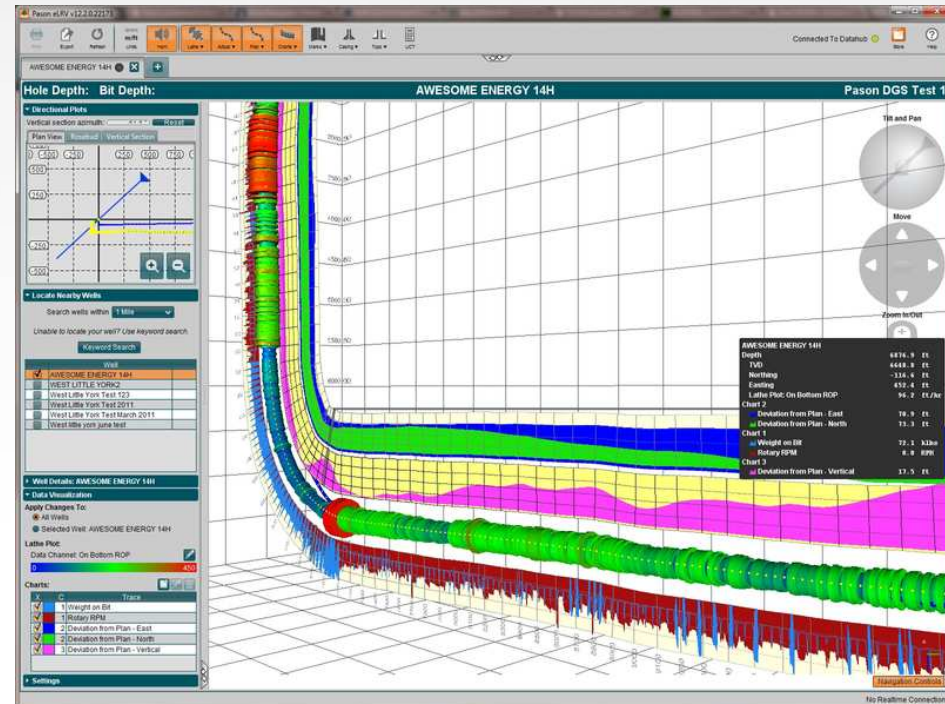
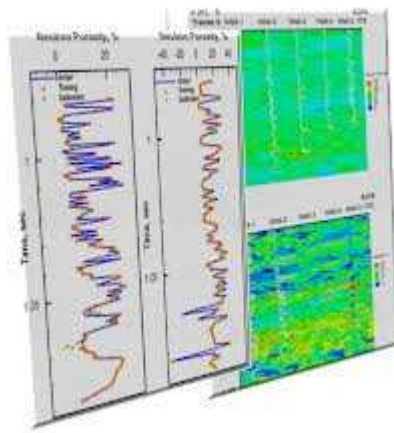
Data Storage / Availability

- Well Files
 - Checklists
- Electronic Well Files
 - Access
 - Siteview
 - Wellview
 - DQA
 - PI
 - Excel
 - Common Electronic Storage



Data Analysis

- Visualization
 - Tools
- Risk Assessment
- Accelerate Decision Making
- Benchmarking



Operational Data

- Doesn't end at Rig Release
- Ongoing Process to utilize and continue to capture data
 - Warm Up Procedures
 - Welding Procedures
 - Cycling
 - Wellbore Integrity Logs - D-51
 - Monitoring
 - SCVF
 - Corrosion/Erosion
 - Mechanical Wear
 - Operating Pressures/temperatures at design conditions
 - H2S

Well Life

- Design
- Execution
- Operations
- Abandonment
- Monitoring



Comment/Questions



Thank You!

Contact Us:

Laricina Energy Ltd.

800, 425 – 1st Street SW

Calgary, Alberta T2P 3L8

403-750-0810

www.laricinaenergy.com

laricina@laricinaenergy.com